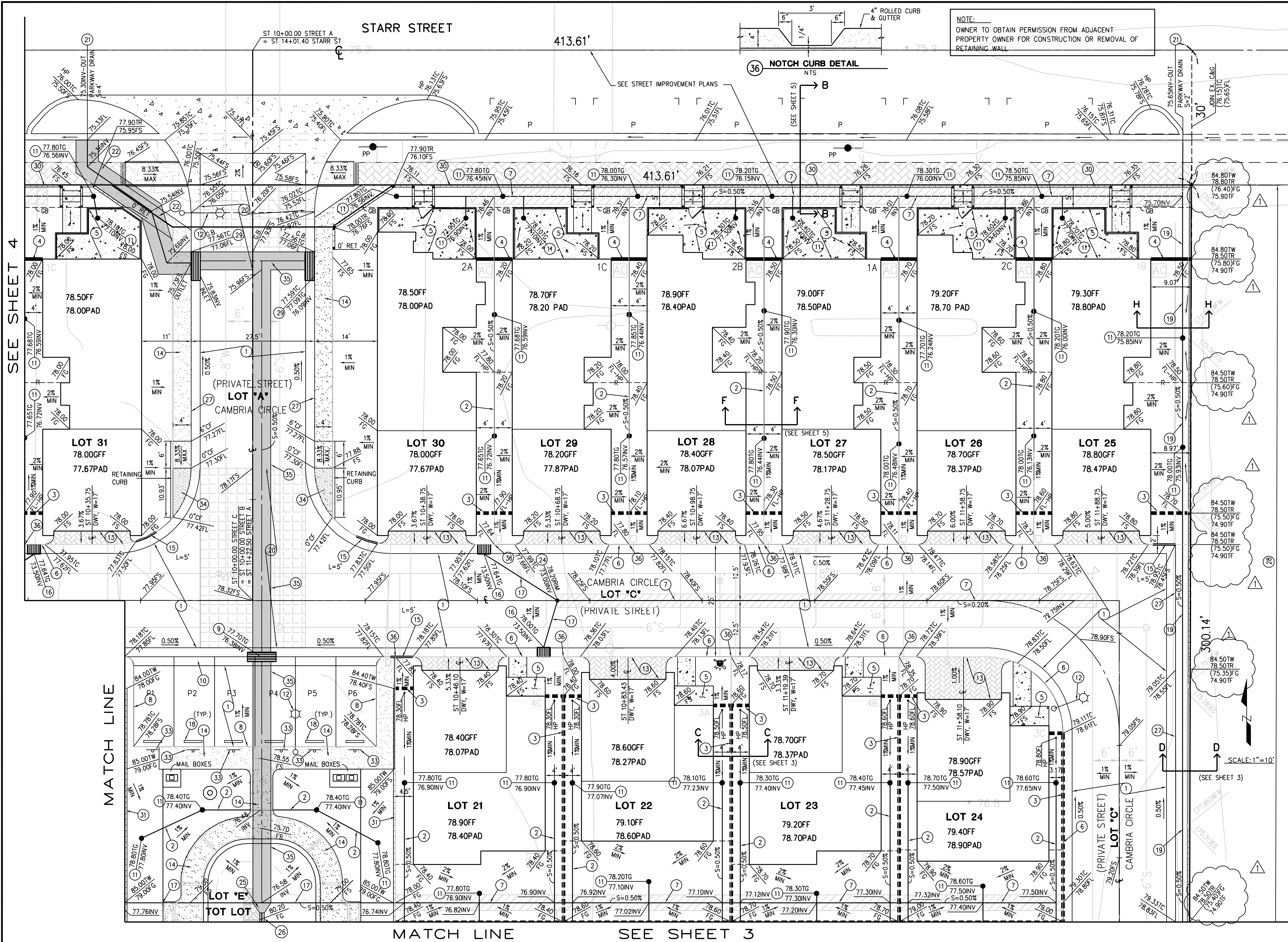
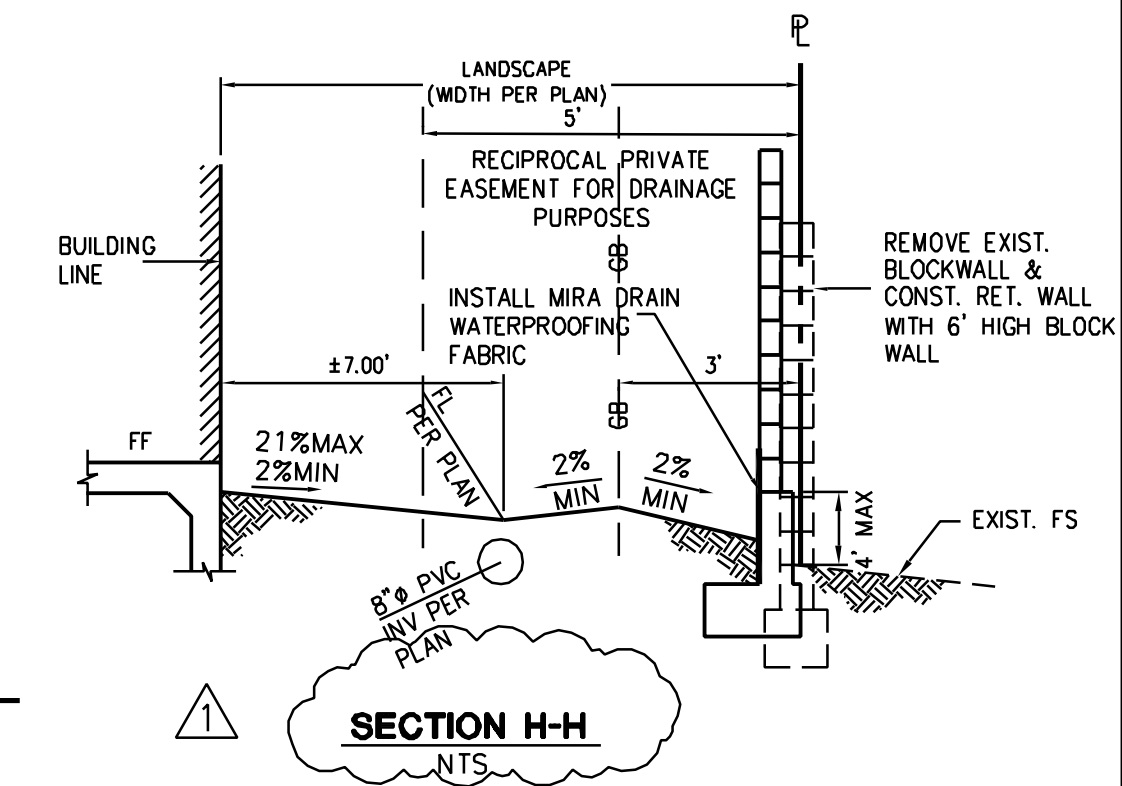


SEE SHEET 4



- CONSTRUCTION NOTES**
1. CONSTRUCT 3"AC OVER 5"AB
 2. CONSTRUCT 4" (SCH40) PVC DRAIN PIPE.
 3. CONSTRUCT WOODEN FENCE PER DETAIL SHEET 4
 4. CONSTRUCT 6' HIGH SPLIT FACE BLOCK WALL (ONE SIDE ONLY - SIDE FACING STARR STREET ONLY)
 5. CONSTRUCT 4" THICK CONC. APRON
 6. CONSTRUCT ROLLED CURB AND GUTTER PER DETAIL SHEET 4
 7. CONSTRUCT 6" PVC (SCH40) PERFORATED DRAIN PIPE WITH GRAVEL BED PER DETAIL SHEET 4
 8. CONSTRUCT CURB TYPE A1-150 (6"CF) PER APWA STD PLAN 120-1
 9. CONSTRUCT CATCH BASIN WITH FLO-GARD INSERT PER APWA STD PLAN 305-2 (2 GRATE). FOR STENCILING SEE SHEET 4
 10. CONSTRUCT ALLEY GUTTER PER DETAIL SHEET 4
 11. CONSTRUCT DRAIN INLET PER DETAIL SHEET 4
 12. INSTALL 5800 LUMEN STREET LIGHT (HPSV) ON 26" BLACK AND WHITE OCTAGONAL POLES, NO ACRYLIC COATING, SINGLE HEAD COBRA FIXTURES ON A 4' MAST ARMS
 13. CONSTRUCT 6" THICK DECORATIVE STAMPED CONCRETE
 14. CONSTRUCT CONCRETE SIDEWALK PER APWA STD. PLAN 113-1
 15. CONSTRUCT CURB TRANSITION FROM ROLLED CURB & GUTTER TO CURB AND GUTTER TYPE A2-150 (6"CF) PER APWA STD PLAN 120-1
 16. CONSTRUCT GRATING CATCH BASIN WITH FLO GARD INSERT PER APWA STD PLAN 305-2 (1 GRATE) FOR STENCILING SEE SHEET 4
 17. CONSTRUCT 6" (SCH40) PVC DRAIN PIPE
 18. INSTALL WHEEL STOPS
 19. CONSTRUCT 8" DIA. (SCH40) PVC DRAIN PIPE
 20. CONSTRUCT 6" THICK STAMPED CONCRETE PAVEMENT
 21. CONSTRUCT PARKWAY DRAIN PER APWA STD PLAN 151-1.
 22. CONSTRUCT 5"x4" RECTANGULAR CHANNEL PER DETAIL SHEET 5
 23. CONSTRUCT 2"x4" RECTANGULAR CHANNEL PER DETAIL SHEET 5
 24. CONSTRUCT CLEANOUT PER APWA STD PLAN 204-1
 25. CONSTRUCT TRANSITION FROM 12" PIPE TO RECTANGULAR BOX
 26. CONSTRUCT 12" (SCH40) PVC DRAIN PIPE
 27. CONSTRUCT CURB & GUTTER TYPE A2-150 (6"CF) PER APWA STD PLAN 120-1
 28. REMOVE EXISTING BLOCK WALL AND CONSTRUCT EARTH RETAINING WALL WITH 6' HIGH BLOCK WALL, LENGTH AND HEIGHT PER PLAN (STRUCTURAL CALCS BY OTHERS)
 29. CONSTRUCT GRATING CATCH BASIN WITH FLO GARD INSERT PER APWA STD PLAN 303-2 (2 GRATE). FOR STENCILING SEE SHEET 4.
 30. CONSTRUCT 2' HIGH (MAX) SPLIT FACE BLOCK WALL (ONE SIDE ONLY, SIDE FACING STARR STREET ONLY)
 31. CONSTRUCT 6' HIGH SPLIT FACE BLOCK WALL (ONE SIDE ONLY - SIDE FACING TOT LOT SIDE ONLY)
 32. CONSTRUCT EARTH RETAINING WALL WITH 6' HIGH BLOCK WALL, LENGTH AND HEIGHT PER PLAN (STRUCTURAL CALCS BY OTHERS)
 33. INSTALL SIGN ON POST " GUEST PARKING ONLY"
 34. CONSTRUCT CURB RAMP WITH TRUNCATED DOME AS SHOWN ON PLANS
 35. CONSTRUCT 4"x4" RECTANGULAR CHANNEL PER DETAIL SHEET 5
 36. CONSTRUCT NOTCH CURB PER DETAIL THIS SHEET.



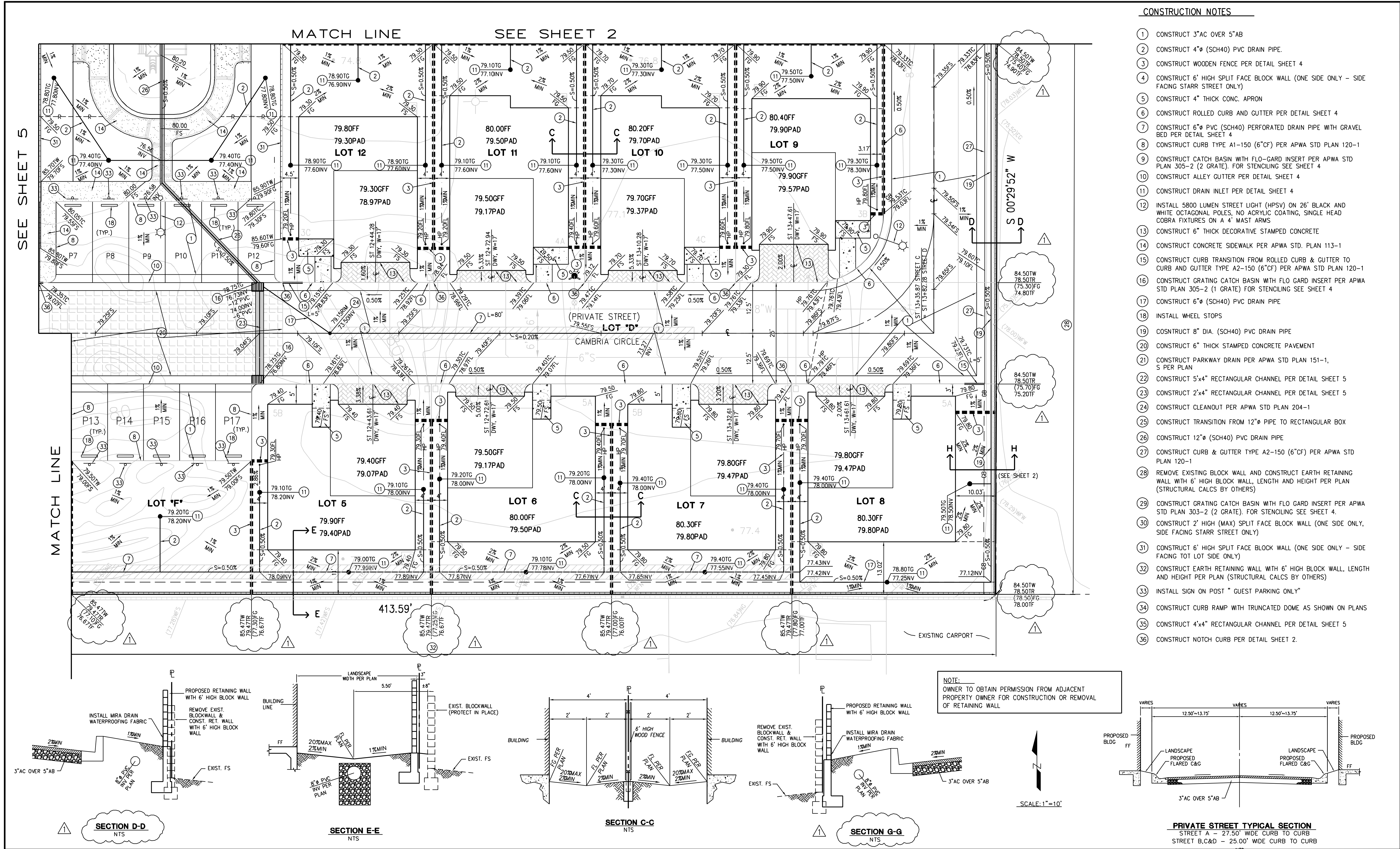
REVISIONS				REFERENCES				PRECISE GRADING PLAN TRACT NO. 17286				CITY OF STANTON PUBLIC WORKS DEPARTMENT	SHEET 2 OF 8
NUMBER	DATE	INITIALS	APP'VD										
1	06/08/09			REVISED RETAINING WALL ELEVATIONS AND SECTIONS D-D, G-G AND H-H.									

PREPARED IN THE OFFICE OF:


DMS CONSULTANTS, INC.
CIVIL ENGINEERS
1077 Lakeside Dr., P.O. Box 1000, Stanton, CA 95765-1000

SURENDER DEWAN, PE RCE345558 EXP. 09/30/09

DRAWN BY NC
CHECKED BY SD
DESIGNED BY SD



REVISIONS				REFERENCES			
NUMBER	DATE	INITIALS	APP'VD				
1	06/08/09			REVISED RETAINING WALL ELEVATIONS AND SECTIONS D-D, G-G AND H-H.			

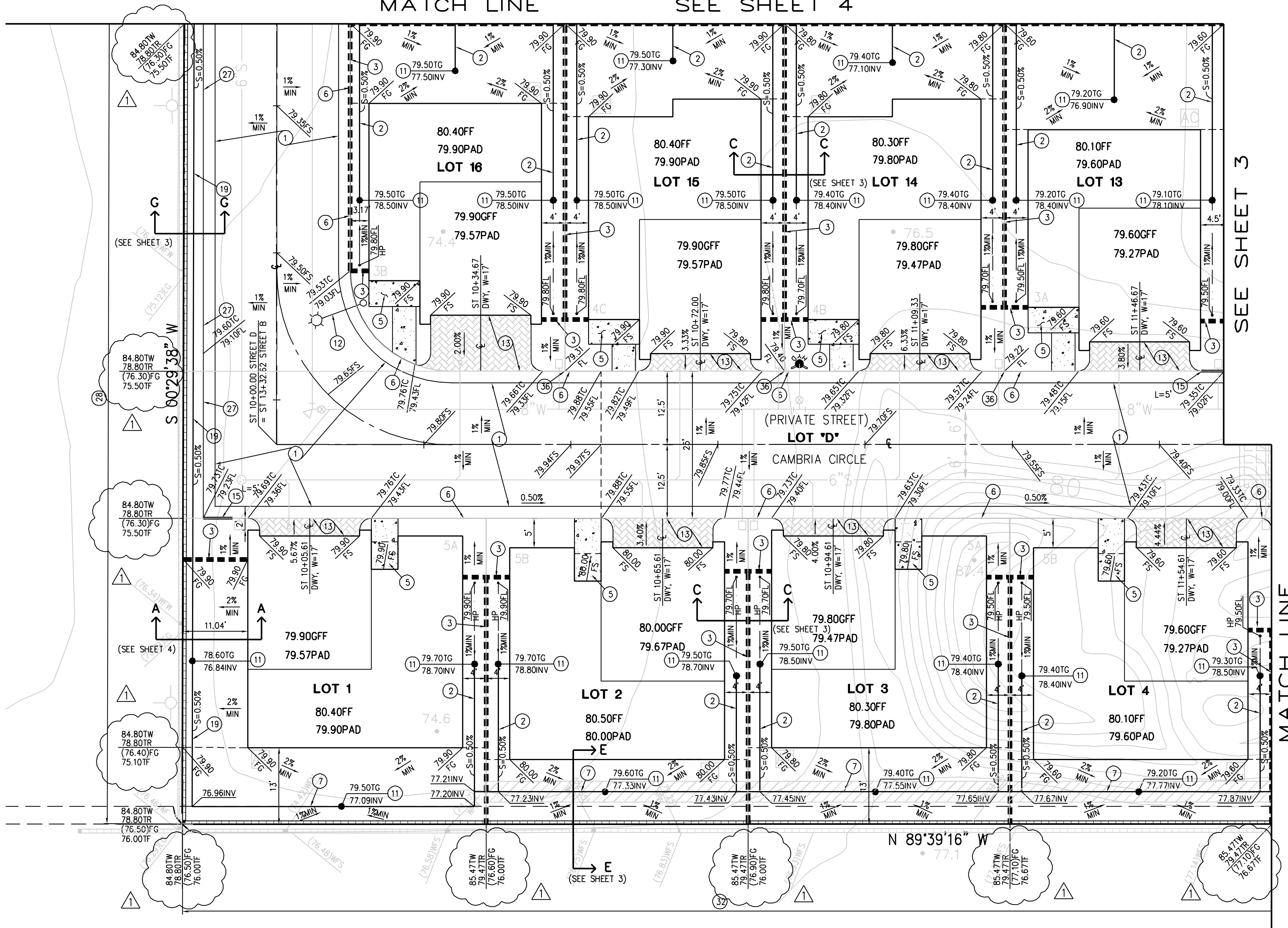
	PREPARED IN THE OFFICE OF:		
	DMS CONSULTANTS, INC. CIVIL ENGINEERS 1937 Lakeside Dr., 2nd Floor, San Jose, CA 95131-1001, Tel: 408-261-8800		
	SURRENDER DEWAN, PE	RCE345559	EXP. 09/30/09
	DRAWN BY	NC	-
	CHECKED BY	SD	-
	DESIGNED BY	SD	-

PRECISE GRADING PLAN TRACT NO. 17286 8042 STARR STREET, STANTON, CA	
CITY OF STANTON PUBLIC WORKS DEPARTMENT	

SHEET 3 OF 8

MATCH LINE

SEE SHEET 4

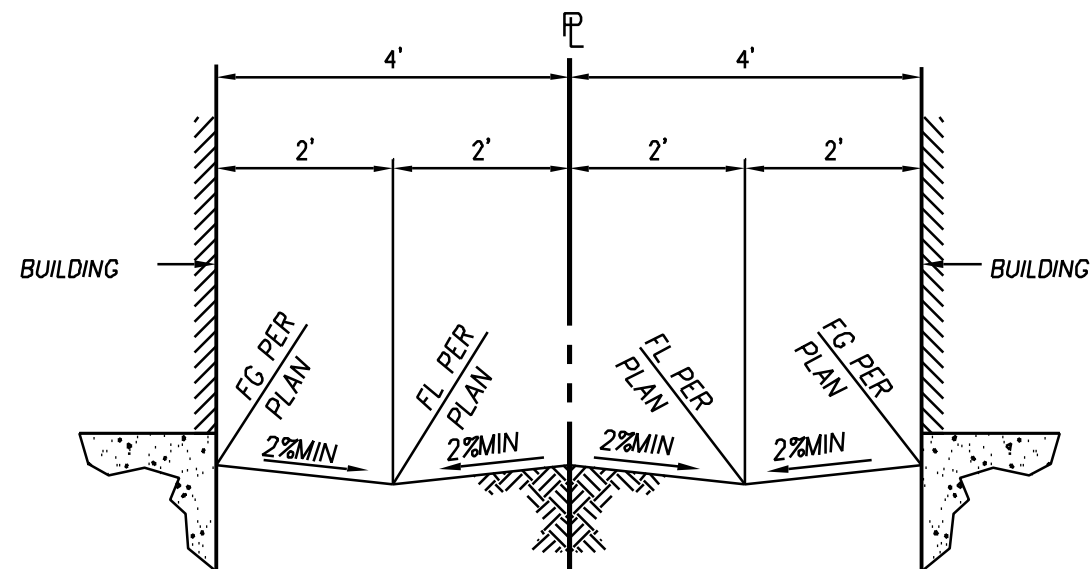
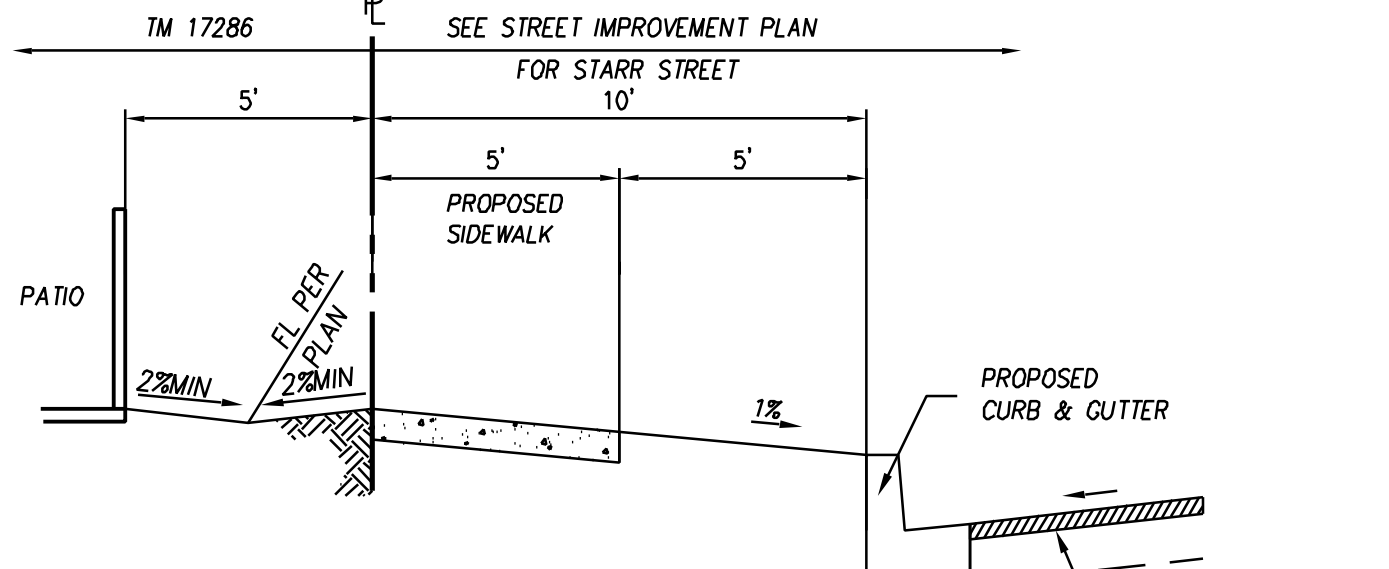


SEE SHEET 3

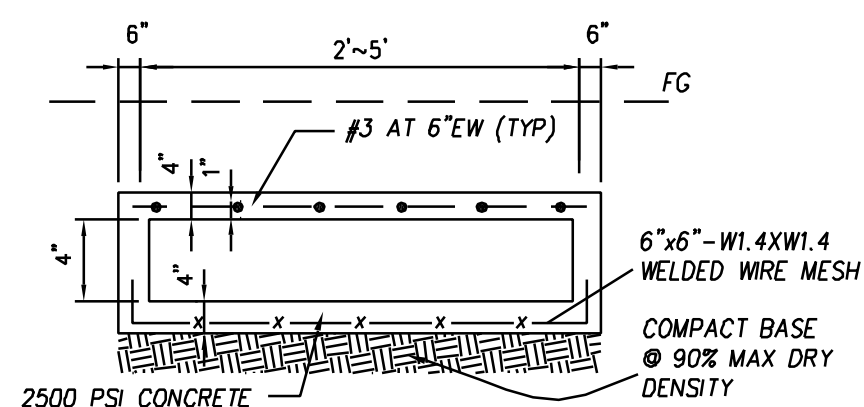
MATCH LINE

CONSTRUCTION NOTES

1. CONSTRUCT 3" AC OVER 5" AB
2. CONSTRUCT 4" (SCH40) PVC DRAIN PIPE.
3. CONSTRUCT WOODEN FENCE PER DETAIL SHEET 4
4. CONSTRUCT 6' HIGH SPLIT FACE BLOCK WALL (ONE SIDE ONLY - SIDE FACING STARR STREET ONLY)
5. CONSTRUCT 4" THICK CONC. APRON
6. CONSTRUCT ROLLED CURB AND GUTTER PER DETAIL SHEET 4
7. CONSTRUCT 6" (SCH40) PERFORATED DRAIN PIPE WITH GRAVEL BED PER DETAIL SHEET 4
8. CONSTRUCT CURB TYPE A1-150 (6"CF) PER APWA STD PLAN 120-1
9. CONSTRUCT CATCH BASIN WITH FLO-GARD INSERT PER APWA STD PLAN 305-2 (2 GRATE). FOR STENCILING SEE SHEET 4
10. CONSTRUCT ALLEY GUTTER PER DETAIL SHEET 4
11. CONSTRUCT DRAIN INLET PER DETAIL SHEET 4
12. INSTALL 5800 LUMEN STREET LIGHT (HPSV) ON 26' BLACK AND WHITE OCTAGONAL POLES, NO ACRYLIC COATING, SINGLE HEAD COBRA FIXTURES ON A 4' MAST ARMS
13. CONSTRUCT 6" THICK DECORATIVE STAMPED CONCRETE
14. CONSTRUCT CONCRETE SIDEWALK PER APWA STD. PLAN 113-1
15. CONSTRUCT CURB TRANSITION FROM ROLLED CURB & GUTTER TO CURB AND GUTTER TYPE A2-150 (6"CF) PER APWA STD PLAN 120-1
16. CONSTRUCT GRATING CATCH BASIN WITH FLO GARD INSERT PER APWA STD PLAN 305-2 (1 GRATE) FOR STENCILING SEE SHEET 4
17. CONSTRUCT 6" (SCH40) PVC DRAIN PIPE
18. INSTALL WHEEL STOPS
19. CONSTRUCT 8" DIA. (SCH40) PVC DRAIN PIPE
20. CONSTRUCT 6" THICK STAMPED CONCRETE PAVEMENT
21. CONSTRUCT PARKWAY DRAIN PER APWA STD PLAN 151-1, S PER PLAN
22. CONSTRUCT 5'x4" RECTANGULAR CHANNEL PER DETAIL THIS SHEET
23. CONSTRUCT 2'x4" RECTANGULAR CHANNEL PER DETAIL THIS SHEET
24. CONSTRUCT CLEANOUT PER APWA STD PLAN 204-1
25. CONSTRUCT TRANSITION FROM 12" PIPE TO RECTANGULAR BOX
26. CONSTRUCT 12" (SCH40) PVC DRAIN PIPE
27. CONSTRUCT CURB & GUTTER TYPE A2-150 (6"CF) PER APWA STD PLAN 120-1
28. REMOVE EXISTING BLOCK WALL AND CONSTRUCT EARTH RETAINING WALL WITH 6' HIGH BLOCK WALL, LENGTH AND HEIGHT PER PLAN (STRUCTURAL CALCS BY OTHERS)
29. CONSTRUCT GRATING CATCH BASIN WITH FLO GARD INSERT PER APWA STD PLAN 303-2 (2 GRATE). FOR STENCILING SEE SHEET 4
30. CONSTRUCT 2' HIGH (MAX) SPLIT FACE BLOCK WALL (ONE SIDE ONLY, SIDE FACING STARR STREET ONLY)
31. CONSTRUCT 6' HIGH SPLIT FACE BLOCK WALL (ONE SIDE ONLY - SIDE FACING TOT LOT SIDE ONLY)
32. CONSTRUCT EARTH RETAINING WALL WITH 6' HIGH BLOCK WALL, LENGTH AND HEIGHT PER PLAN (STRUCTURAL CALCS BY OTHERS)
33. INSTALL SIGN ON POST " GUEST PARKING ONLY"
34. CONSTRUCT CURB RAMP WITH TRUNCATED DOME AS SHOWN ON PLANS
35. CONSTRUCT 4'x4" RECTANGULAR CHANNEL PER DETAIL THIS SHEET
36. CONSTRUCT NOTCH CURB PER DETAIL SHEET 2.

SECTION F-F
NTSSECTION B-B
NTS

SCALE: 1"=10'

22 23 35 CONCRETE RECTANGULAR CHANNEL
NTS

REVISIONS

NUMBER	DATE	INITIALS	APP'VD
1	06/08/09		
REVISED RETAINING WALL ELEVATIONS AND SECTIONS D-D, G-G AND H-H.			

REFERENCES



PREPARED IN THE OFFICE OF:

DMS
CONSULTANTS, INC.
CIVIL ENGINEERS
19371 Lakeside Dr., P.O. Box 1000, Stanton, CA 95759
Tel: 925-955-1111, Fax: 925-955-1112

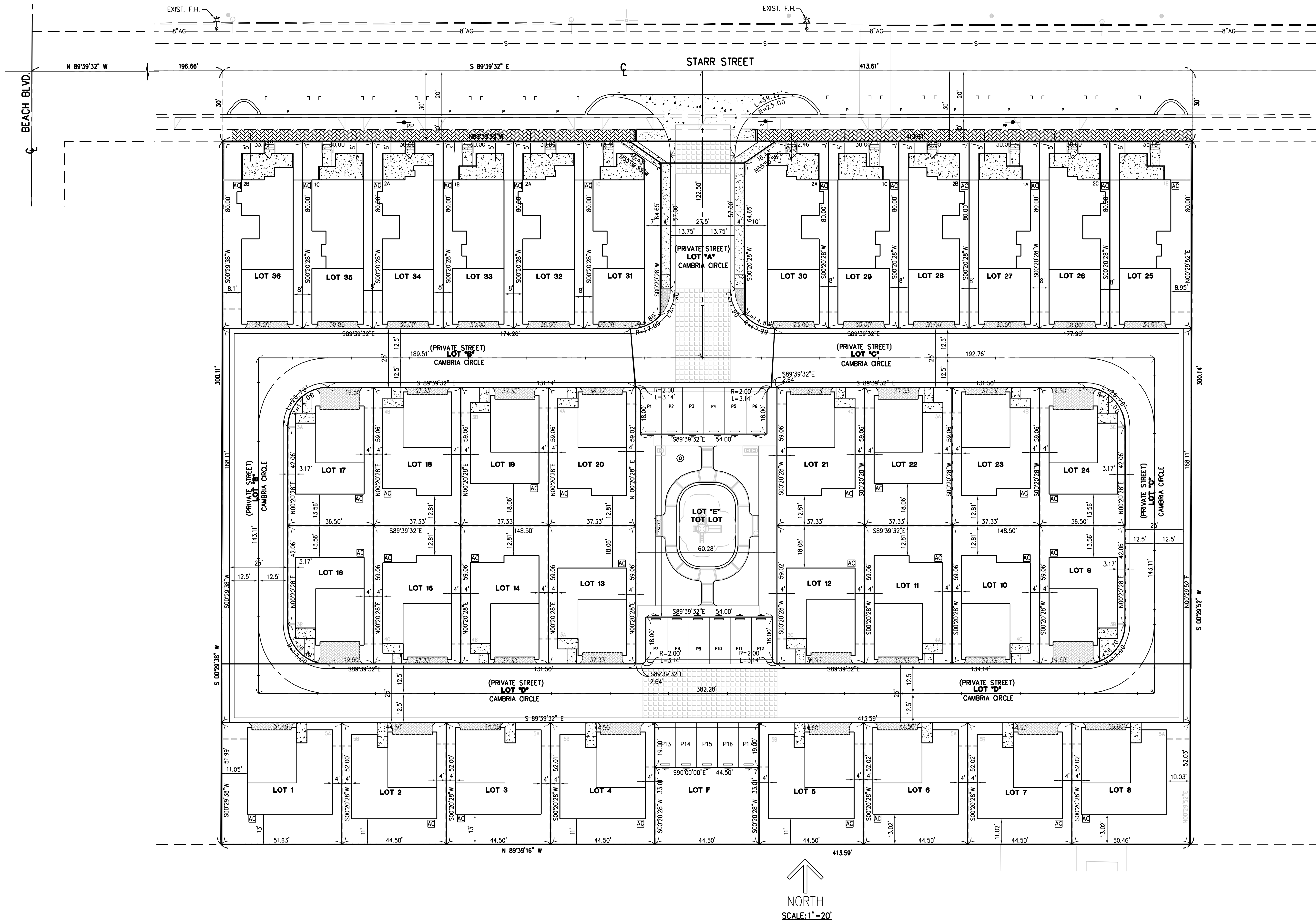
DRAWN BY	NC	EXP. 09/30/09
CHECKED BY	SD	
DESIGNED BY	SD	

PRECISE GRADING PLAN
TRACT NO. 17286

8042 STARR STREET, STANTON, CA

CITY OF STANTON
PUBLIC WORKS DEPARTMENT

SHEET 5 OF 8



REVISIONS

NUMBER	DATE	INITIALS	APP'VD

REFERENCES



PREPARED IN THE OFFICE OF:

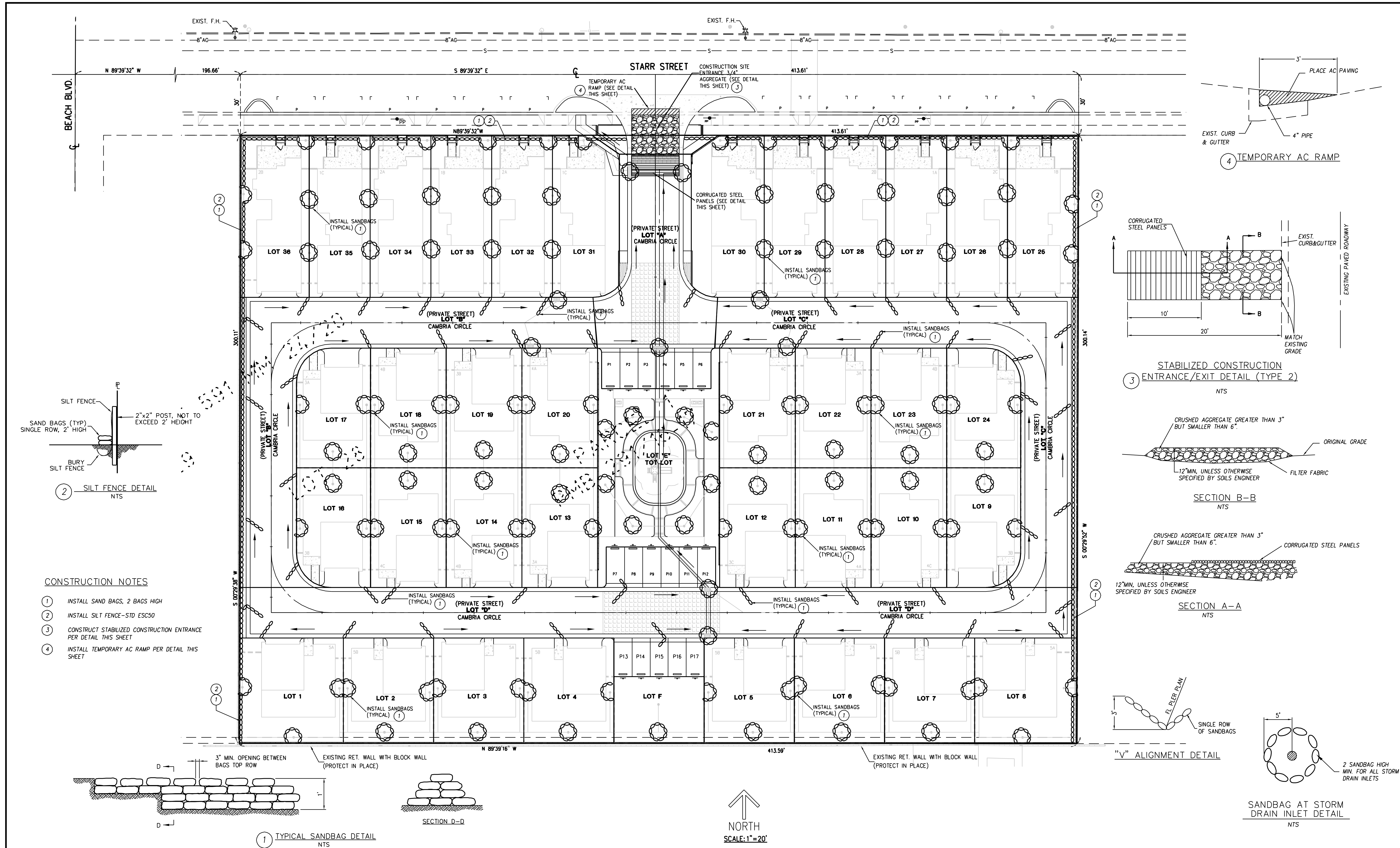
DMS
CONSULTANTS, INC.
CIVIL ENGINEERS
10377 Lakes Dr., P.O. Box 1000, Stanton, CA 95759
TEL: (925) 741-1600 FAX: (925) 741-1601

SURRENDER DEWAN, PE	RCE34559	EXP. 09/30/09
DRAWN BY	NC	-
CHECKED BY	SD	-
DESIGNED BY	SD	-

HORIZONTAL CONTROL PLAN TRACT NO. 17286

8042 STARR STREET, STANTON, CA

CITY OF STANTON
PUBLIC WORKS DEPARTMENT



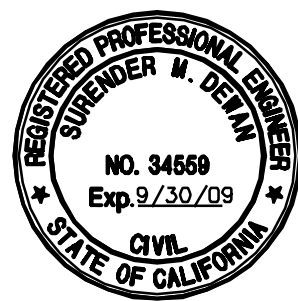
CONSTRUCTION NOTES

1. INSTALL SAND BAGS, 2 BAGS HIGH
2. INSTALL SILT FENCE-STD ESC50
3. CONSTRUCT STABILIZED CONSTRUCTION ENTRANCE PER DETAIL THIS SHEET
4. INSTALL TEMPORARY AC RAMP PER DETAIL THIS SHEET

REVISIONS

NUMBER	DATE	INITIALS	APP'VD

REFERENCES



PREPARED IN THE OFFICE OF:

DMS
CONSULTANTS, INC.
CIVIL ENGINEERS
15371 Lake St., P.O. Box 1000, Stanton, CA 95759-1000
TEL: 925-955-1111 FAX: 925-955-1112

SUREN DEWAR, PE	RCE34559	EXP. 09/30/09
DRAWN BY	NC	-
CHECKED BY	SD	-
DESIGNED BY	SD	-

EROSION CONTROL PLAN
TRACT NO. 17286

8042 STARR STREET, STANTON, CA

CITY OF STANTON
PUBLIC WORKS DEPARTMENT